



2020 MELGES 32 WINTER SERIES AT DAVIS ISLAND YACHT CLUB

With Regattas on January 4-5, February 22-23, and March 21-22

SAILING INSTRUCTIONS

1. RULES

The regatta will be governed by the rules as defined in The Racing Rules of Sailing (RRS).

2. NOTICES TO COMPETITORS

Notices to competitors will be posted on the official notice board(s) located on the west exterior wall on the lower level of the DIYC clubhouse.

3. CHANGES TO SAILING INSTRUCTIONS

Any change to the sailing instructions will be posted before 0800 on the day it will take effect, except that any change to the schedule of races will be posted by 2000 on the day before it will take effect.

4. SIGNALS MADE ASHORE

4.1 Signals made ashore will be displayed from the flagpole at the west end of the property.

4.2 When flag AP is displayed ashore, '1 minute' is replaced with 'not less than 45 minutes' in the race signal AP.

5. CLASS FLAGS

Class flag will be numeral pennant 1.

6. RACING AREAS

Attachment 1 shows the location of racing areas. Should conditions warrant, the Race Committee may move the race area further south. If moving the race area, the race committee boat will be underway displaying code flag L.

7. THE SCHEDULE

7.1 All boats must be in the water by 0830 on the first race day of a Regatta and shall remain in the water until the end of the Regatta, unless granted prior permission by the Race Committee.

7.2 First scheduled warning on Saturday and Sunday of each Regatta: 1000 hrs.

7.3 There will be no Warning Signal after 1400 on Sunday of each Regatta.

7.4 Seven races are scheduled for each Regatta.

8. THE COURSE

8.1 The diagrams in Attachment II show the courses, including the approximate angles between legs, the order in which marks are to be passed, and the side on which each mark is to be left.

8.2 The course identifier, approximate magnetic bearing and distance in nautical miles to the first mark will be displayed from the race committee signal vessel prior to the warning signal for each race.

An example is shown below:

4 Number of legs (odd: windward finish; even: leeward finish)

270 Approx magnetic bearing to windward mark

1.2 1.2 nm to windward mark

9. MARKS

9.1 Windward and leeward marks will be yellow tetrahedrons. The offset mark will be a small orange ball. The starting and finishing marks will be green tetrahedrons and/or RC vessels.

9.2 New marks, as provided in SI 12, will be orange tetrahedrons.

9.3 If only one leeward mark is present it shall be rounded to port.

10. THE START

10.1 The starting line will be between a staff displaying an orange flag on the race committee signal vessel at the starboard end and either (a) the course side of the starting mark or (b) a staff displaying an orange flag on a vessel at the port end.

11. RECALLS

11.1 After a start the race committee will attempt to hail boats to be scored OCS, UFD or BFD on VHF.

11.2 The timing and order of such hails or the failure of a boat to hear the hail shall not be considered grounds for redress, changing RRS 62.1.

12. CHANGE OF THE NEXT LEG OF THE COURSE

To change the next leg, the race committee will lay a new mark, move the finishing line or move the gate and remove the old mark as soon as practicable. When in a subsequent change a new mark is replaced, it will be replaced by an original mark.

13. THE FINISH

13.1 The finishing line will be between a staff displaying an orange flag on a race committee vessel and the course side of the finishing mark.

13.2 Flag A displayed with no sound while boats are finishing means "No more racing today."

14. TIME LIMITS

14.1 The time limit for the first boat to sail the course and finish is 90 minutes.

14.2 Boats still racing more than 30 minutes after the first boat sails the course and finishes will be scored TLE (Time Limit Expired) without a hearing. The score will be

2 points more than the last boat to finish. This changes RRS 35, A4, and A5.

15. PENALTY SYSTEM

15.1 RRS Appendix V will be in effect.

15.2 V1 PENALTY AT THE TIME OF AN INCIDENT The first two sentences of rule 44.1 are changed to: 'A boat may take a One-Turn Penalty when she may have broken one or more rules of Part 2 or rule 31 in an incident while racing. However, when she may have broken one or more rules of Part 2 while in the zone around a mark other than a starting mark, her penalty shall be a Two-Turns Penalty.

15.3 V2 PENALTY TAKEN AFTER A RACE After a race, a boat that may have broken one or more rules of Part 2 or rule 31 in an incident while racing may take a Post-Race Penalty for that incident. A boat takes the penalty by delivering a written notice to the race office that identifies the race number and when and where the incident occurred. The penalty shall be a 30% Scoring Penalty, calculated as stated in rule 44.3(c). However, rules 44.1(a) and (b) apply, and the penalty shall not be taken after a protest hearing involving the incident has begun.

16. PROTESTS AND REQUESTS FOR REDRESS

16.1 Protest forms are available in the Regatta Room. Protests shall be delivered there within the protest time limit which is **45** minutes after the race committee finish boat docks after the last race of the day. Docking time shall be posted.

16.2 The race committee will post a list of penalties being assigned by the race committee prior to the end of protest time limit. The deadline for requesting redress based on these scores will be either 30 minutes after posting of the penalty notice or the protest time limit, whichever is later. This changes RRS 62.2.

16.3 Notices will be posted promptly after the receipt of a protest or a request for redress to inform competitors of hearings in which they are parties or named as witnesses. Hearings will be held in the Regatta Room in approximately the order of receipt beginning as soon as possible after their receipt.

16.4 On the last day of each Regatta a request for redress based on a jury decision shall be delivered no

later than 30 minutes after the decision was posted, changing RRS 62.2.

16.5 In a protest hearing, the representative from each yacht shall be the owner or the Category 1 driver. Category 3 sailors from the protestor or protestee are not allowed in the protest room or to be in contact with their representative in the protest room. Category 3 sailors from other boats may be allowed in the protest room as a witness.

17. SAFETY

17.1 Prior to the warning signal for the first race of each day in which it intends to compete, each boat is requested to check in by VHF or sail by the race committee signal boat and hail its sail number.

17.2 A boat retiring from a race or leaving the racing area early shall promptly notify the race committee either by hail, over VHF, or by telephone to the Clubhouse at (813) 251-1158.

17.3 When winds reach the class limit of 25 knots sustained or gusting over 28 knots read by the club anemometer the racing will be postponed. No other anemometer will be used for these readings.

18. RADIO COMMUNICATION

18.1 A boat shall neither make nor receive radio, phone or other data transmissions while racing not available to all boats, except in an emergency.

19. SCORING

19.1 Seven races are scheduled for each regatta, 21 total for the series

19.2 For each Regatta:

- i. A boat's score will be the total of all her race scores
- ii. One completed race is necessary to constitute a regatta.

19.3 To be scored for the Melges 32 Winter Series:

- i. Competitors must register, pay and compete in all three regattas.

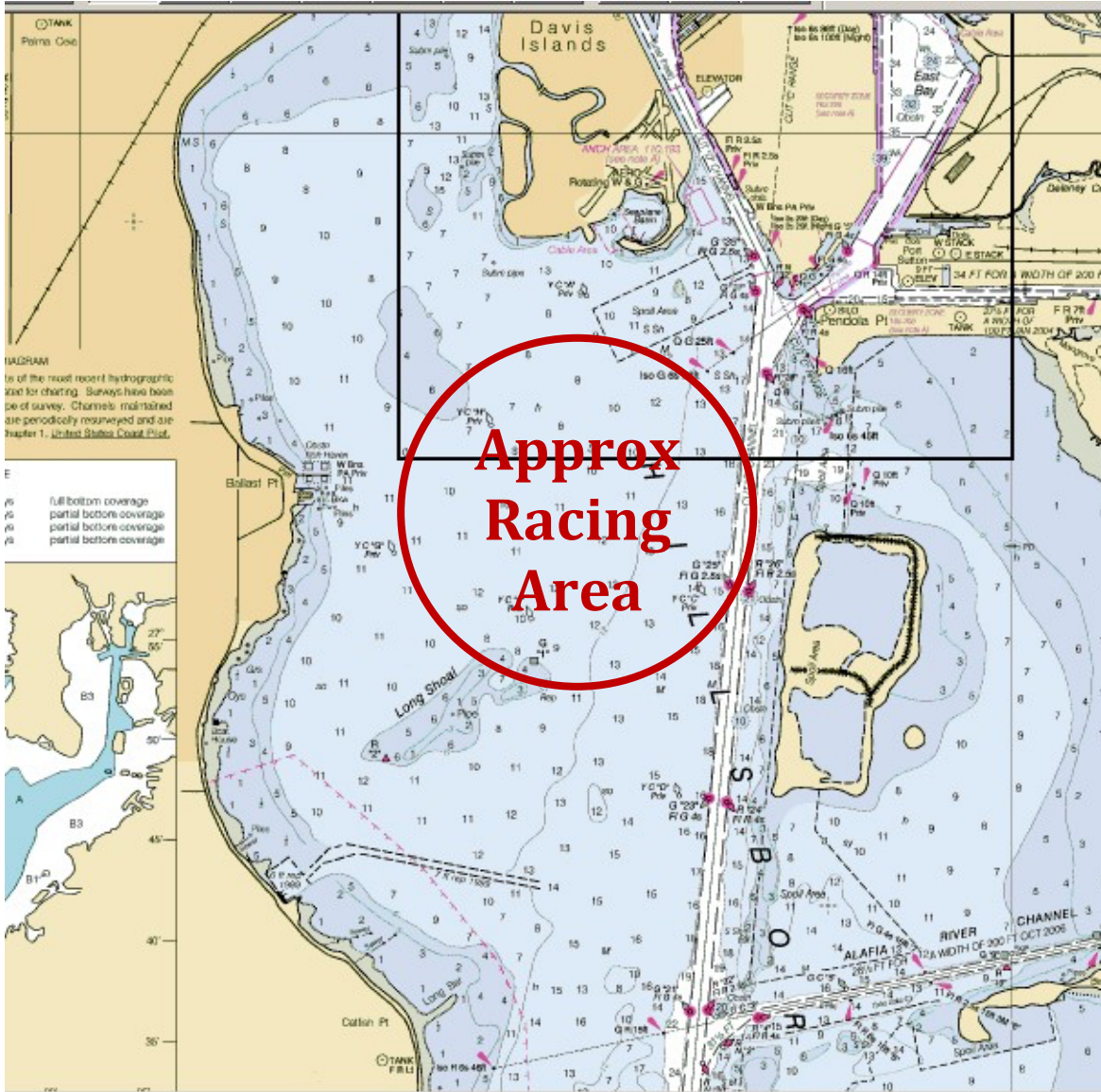
ii. The skipper must be the same in all three regattas unless approved in writing by the Race Committee.

iii. The same boat must be used in all three regattas unless approved in writing by the Race Committee.

iv. Appendix A9 of the RRS will be used to score the Melges 32 Winter Series.

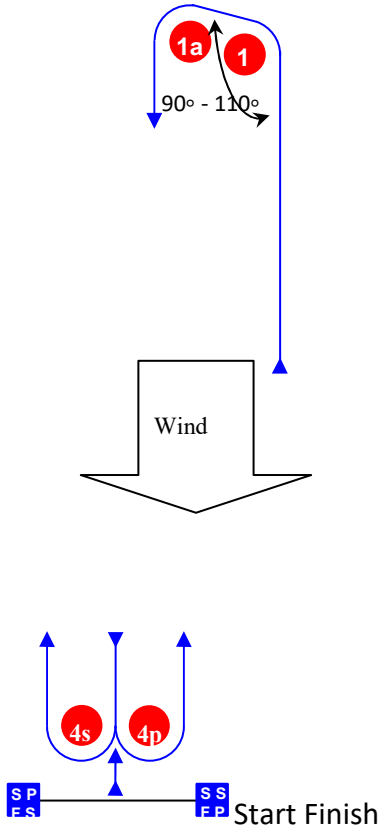
v. A boat's Melges 32 Winter Series score will be the total of all her race scores unless a throwout is reached per NOR.

ATTACHMENT I – APPROXIMATE RACING AREA



ATTACHMENT II – SAMPLE COURSE DIAGRAMS

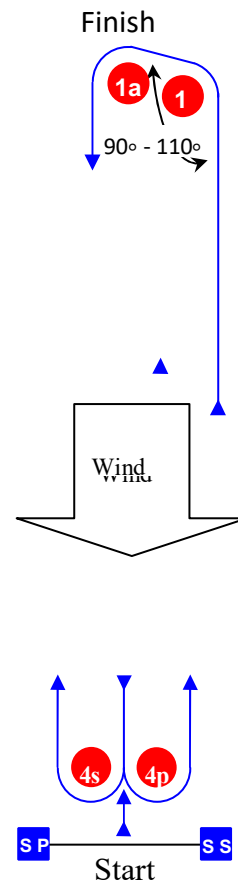
LA



Course: Leeward finish

Signal	Mark Rounding Order
LA2	Start – 1 – 1a – 4s/4p – 1 – 1a – Finish
LA3	Start – 1 – 1a – 4s/4p – 1 – 1a – 4s/4p – 1 – 1a – Finish
LA4	Start – 1 – 1a – 4s/4p – 1 – 1a – 4s/4p – 1 – 1a – 4s/4p – 1 – 1a – Finish

FP FS
WA



Course: Windward Finish

Signal	Mark Rounding Order
WA2	Start – 1 – 1a – 4s/4p – Finish
WA3	Start – 1 – 1a – 4s/4p – 1 – 1a – 4s/4p – Finish
WA4	Start – 1 – 1a – 4s/4p – 1 – 1a – 4s/4p – 1 – 1a – 4s/4p – Finish